

KITTITAS
COUNTY

HAZARD MITIGATION PLAN

Town of South Cle Elum
Annex



Kittitas County
Public Works Department

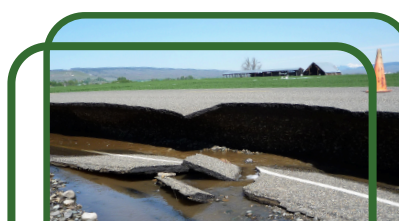




TABLE OF CONTENTS

1. Introduction.....	1
2. Local Planning Team.....	1
3. Jurisdiction Profile	1
3.1. Population	1
3.1.1. Underserved Population	2
3.2. Brief History.....	3
3.3. Governing Body Format	3
4. Development Trends	3
4.1. Changes in Priority	4
5. Capability Assessment.....	4
5.1. Planning and Regulatory Capabilities	5
5.2. Administrative and Technical Capabilities.....	7
5.3. Financial Resources	7
5.4. Education and Outreach Capabilities.....	8
5.5. Needs to Expand/Improve Capabilities	8
6. Hazard Mitigation Plan Integration	8
6.1. Existing Plan Integration	9
6.2. Potential Future Integration	9
7. Significant Hazard Past Events	9
8. National Flood Insurance Program.....	10
8.1. Floodplain Manager.....	10
8.2. Participation Activities.....	10
8.2.1. Substantial Damage	10
8.2.2. Substantial Improvement	11
8.3. Repetitive Loss and Severe Repetitive Loss Property	11
9. Hazard Vulnerability and Impact Assessment.....	12
10. Hazard Risk Ranking.....	16
11. Mitigation Actions	18
Appendix A. Hazard Maps.....	33
Appendix B. Plan Adoption	43



1. INTRODUCTION

This Annex details the hazard mitigation elements specific to the Town of South Cle Elum, a participating jurisdiction to the 2024 Kittitas County Hazard Mitigation Plan update. This Annex is not intended to be a standalone document but supplements the information contained in **Volume 1 (Countywide Planning Elements)**. Therefore, all sections of **Volume 1** including the planning process, hazard identification and risk assessment, mitigation strategy (includes mitigation goals and objectives), and plan maintenance apply to and were met by the Town of South Cle Elum. This Annex provides additional information specific to the Town, with a focus on providing additional details on the hazard risk assessment and mitigation strategy (i.e., mitigation actions) for this community.

2. LOCAL PLANNING TEAM

The Town of South Cle Elum Local Planning Team was comprised of the members listed on **Table 1**.

Table 1. Town of South Cle Elum Local Planning Team Members

Name	Title	Department
Jim DeVere	Mayor	Town of South Cle Elum Administration
Matthew Mackenzie	Public Works Superintendent	Town of South Cle Elum Public Works Department

3. JURISDICTION PROFILE

The Town of South Cle Elum is bordered by the Yakima River, the City of Cle Elum, and Interstate 90 to the north, and Unincorporated Kittitas County surrounds the Town to the east, south and west. Mt. Peoh is to the south, Lookout Mountain is to the east, Mt. Stuart is to the north and the Cascade Mountains are to the west. The Iron Horse State Park and the John Wayne Trail run along the Town's southern border.

3.1. Population

The Town of South Cle Elum had a population of 715 as of July 1, 2022.¹ Between 2010 and 2020, the population increased by approximately 5.1%; and another population increase of 27.9% occurred between 2020 and 2022.^{2,3} **Table 2** shows the Town of South Cle Elum's population distribution between 2010 and 2022.

Table 2. Population Estimates

Jurisdiction	2010	2020	2022	Population Change (2010 – 2022)
Town of South Cle Elum	532	559	715	34.4%

¹ United States Census Bureau. (2022). Town of South Cle Elum (DP05: ACS Demographics and Housing Estimates, 2022: ACS 5-Year Estimates Data Profiles). Retrieved from <https://data.census.gov/table/ACSDP5Y2022.DP05?q=160XX00US5365765>.

² United States Census Bureau. (2020). Town of South Cle Elum (P1: Total Population, 2020: DEC Demographic and Housing Characteristics). Retrieved from <https://data.census.gov/table/DECENNIALDHC2020.P1?t=Populations and People&q=160XX00US5365765&y=2020&d=DEC Demographic and Housing Characteristic>.

³ Washington State Office of Financial Management. (2010). 2010 Census 2-Page Demographic Profiles: Town of South Cle Elum. Retrieved from <https://ofm.wa.gov/washington-data-research/population-demographics/decennial-census/census-2010/2010-census-2-page-demographic-profiles>.



3.1.1. Underserved Population

FEMA defines underserved populations as groups that have limited or no access to resources or that are otherwise disenfranchised. These groups may include, but are not limited to, people who are socioeconomically disadvantaged, people with limited English proficiency, geographically isolated or educationally disenfranchised people, people of color as well as those of ethnic and national origin minorities, women and children, individuals with disabilities and others with access and functional needs, and seniors.⁴

The CDC's SVI is considered an appropriate and authoritative dataset to identify areas where efforts can be prioritized to ensure equitable outcomes from mitigation planning and actions. Social vulnerability refers to a community's capacity to prepare for and respond to the stress of natural, human-caused, and technological disasters. CDC's SVI combines 16 census-derived social factors, within four (4) themes (i.e., socioeconomic status, household characteristics, racial and ethnic minority status, and housing type and transportation) that summarizes the extent to which an area is socially vulnerable to disasters. The overall SVI combines all variables to provide a comprehensive assessment, and the possible scores range from zero (0) (lowest vulnerability) to one (1) (highest vulnerability).⁵

The overall SVI score for Kittitas County is 0.3366 which indicates a low to medium level vulnerability. **Table 3** outlines the SVI information for each social factor for the Town of South Cle Elum.⁶

Note: ArcGIS mapping analysis was performed utilizing Census Tract data by overlaying Census Tracts with the Town of South Cle Elum planning area boundary. The information outlined in this section includes the best available data from the entire Census Tracts that intersect the jurisdiction.

Table 3. Social Vulnerability Index (2022)

Theme	Social Factors	Percent
Socioeconomic Status	People below 150% poverty estimate	41.5%
	Unemployed (Civilian 16 years old and older)	2.8%
	Housing Cost Burden	15.6%
	No High School Diploma	6.5%
	No Health Insurance	5.8%

⁴ Federal Emergency Management Agency. (n.d.). Glossary: Underserved Population/Communities. Retrieved from <https://www.fema.gov/about/glossary>.

⁵ Centers for Disease Control and Prevention. (2024). CDC/ATSDR SVI 2022 Documentation. Retrieved from <https://www.atsdr.cdc.gov/placeandhealth/svi/documentation/pdf/SVI-2022-Documentation-H.pdf>.

⁶ Centers for Disease Control and Prevention. (2022). CDC/ATSDR Social Vulnerability Index (SVI). Retrieved from https://www.atsdr.cdc.gov/placeandhealth/svi/interactive_map.html.



Theme	Social Factors	Percent
Household Characteristics	65 years old and older	12.2%
	17 years and younger	19.5%
	Civilian with a Disability	13.7%
	Single-Parent Household	0.4%
	English Language Proficiency	0.0%
Racial and Ethnic Minority Status	<ul style="list-style-type: none"> Hispanic or Latino (of any race) Black or African American Asian American Indian or Alaska Native Native Hawaiian or Pacific Islander Two or More Races Other Races 	28.9%
Housing Type and Transportation	Multi-Unit Structures	0.0%
	Mobile Homes	1.1%
	Crowding	1.0%
	No Vehicle	0.0%
	Group Quarters	0.0%

3.2. Brief History

The Town of South Cle Elum was initially developed to serve the Milwaukee Railroad. In 1909, the Chicago, Milwaukee and Puget Sound Railway chose Cle Elum as a division point between the Coast and Columbia divisions on its future transcontinental line. Initially it was meant to be a water, fuel, and crew change location, and afterwards as a full service repair shop with roundhouse. It was incorporated on August 20, 1911. After electrification, a substation was added. The population during this time was split between railroaders, coalminers, and loggers. When the Milwaukee Railroad went into receivership in the late 1970s, the State of Washington converted the right of way into a state park.

3.3. Governing Body Format

The Town of South Cle Elum is governed by a five (5) member City Council and a City Mayor. The governing body is elected to four (4) year terms and will assume responsibility for adoption, implementation, and maintenance of this Plan.

4. DEVELOPMENT TRENDS

The Town's Comprehensive Plan serves as a guide to address future growth and development projects in the Town within the Urban Growth Area (UGA), and it embodies the community's goals and policies, and aims to guide the Town's development over the next 20 years. Under the State of Washington's Growth Management Act (GMA) and RCW.36.70A, cities must update their Comprehensive Plan every eight (8) years. The Town of South Cle Elum Comprehensive Plan was last adopted in June 2022. The Town's Comprehensive Plan has the following elements – Historic Preservation, Land Use, Housing, Economic Development, Transportation, Utilities, and Capital Facilities.



At this time, development in South Cle Elum trends towards residential uses into the foreseeable future. At the time of this Plan update, there is a 12 home development in the planning stages along the Yakima River. There are no other planned developments. The Town does have limited and selective space for light industry and commercial development. UGA boundaries will remain unchanged except to the east, where the Town hopes to expand in the future. Kittitas County population projections, developed in conjunction with its cities, show a need for an additional 235 homes in South Cle Elum by 2037. The Town of South Cle Elum and its UGA have land capacity for an additional 235 units to meet the residential needs through 2037 while preserving critical areas, providing parks and right-of-way, and keeping market values affordable.

Table 4 summarizes development trends in the performance period since development of the previous hazard mitigation plan and expected future development trends.

Table 4. Recent and Expected Development Trends

Criteria	Response
Has your jurisdiction annexed any land since the development of the previous Hazard Mitigation Plan?	Yes
<i>If yes, give the estimated area annexed and estimated number of parcels or structures.</i>	Roughly two (2) to three (3) city sized lots were added in the southern portion of Town, near Westside Road.
Is your jurisdiction expected to annex any areas during the performance period of this Plan?	No
Has your jurisdiction had any major changes in development over the <u>past</u> five (5) years that have occurred in hazard prone areas?	No
<i>If yes, please briefly describe.</i>	N/A
Are any areas targeted for development or major redevelopment in the <u>next</u> five (5) years that will occur in hazard prone areas?	Yes
<i>If yes, please briefly describe.</i>	The Town is planning on the development of a small development (12 homes) along the Yakima River in the northern most portion of the Town on South Cle Elum Way.
Provide a qualitative description of where development has occurred in hazard areas.	There has been development along the bank of the Yakima River in the northern portion of Town, near the bridge that connects the Town with the City of Cle Elum. The reason this may be a hazard area is its proximity to the Yakima River.

4.1. Changes in Priority

The overall hazard mitigation priorities have not significantly changed for the Town of South Cle Elum since the last Plan update. However, mitigation actions from the previous Plan were updated, and a more concerted effort on achieving equitable outcomes for all communities, including underserved communities and socially vulnerable populations, has been implemented.

5. CAPABILITY ASSESSMENT

Federal regulations require hazard mitigation plans to identify goals for reducing long-term vulnerabilities to the identified hazards in the planning area (Section 201.6(c)(3)(i)). A critical step in the development



of specific hazard mitigation actions and projects is assessing existing authorities, policies, programs, and resources and capabilities to use or modify local tools to reduce losses and vulnerability from profiled hazards.

A capability assessment was conducted for the Town of South Cle Elum and participating jurisdictions' authorities, policies, programs, and resources. Goals and mitigation actions were developed using input from this assessment. Information regarding the Town's jurisdictions' implementation of and continued participation in the National Flood Insurance Program (NFIP) can be found in Section 8 of this Annex.

The Local Planning Team assessed the Town's capabilities that can contribute to the reduction of long-term vulnerabilities to hazards. The capabilities include the following categories:

- Planning and Regulatory Capabilities
- Administrative and Technical Capabilities
- Financial Capabilities
- Education and Outreach Capabilities

Additionally, ways to expand on and improve these existing policies and programs to integrate hazard mitigation into the day-to-day activities and programs of the Town were considered.

5.1. Planning and Regulatory Capabilities

These include local ordinances, policies, and laws to manage growth and development (e.g., land use plans, capital improvement plans, transportation plans, emergency preparedness and response plans, building codes, and zoning ordinances). The Town of South Cle Elum will adopt the approved 2024 Kittitas County Hazard Mitigation Plan by reference into the Town's Comprehensive Plan. **Table 5** contains a list of legal and regulatory capabilities.

Table 5. Planning and Regulatory Capabilities

Capability Category	Local Authority	Other Jurisdictional Authority	State Mandated	Comments
Codes, Ordinances, and Requirements				
Building Code	Yes	No	Yes	Title 15 of the South Cle Elum Municipal Code (SEMC) adopts the 2009 International Building Code (2010). Title 14.04 of the Kittitas County Code (KCC). Chapter 19.27 of the Revised Code of Washington (RCW)
Zoning Code	Yes	No	Yes	Title 17 of the SEMC Title 17 of the KCC
Subdivisions Code	Yes	No	Yes	Title 16 of the SEMC Title 16 of the KCC
Post Disaster Recovery	No	No	No	
Real Estate Disclosure	No	No	Yes	Chapter 64.06 RCW
Growth Management	Yes	No	Yes	RCW 36.70A



Capability Category	Local Authority	Other Jurisdictional Authority	State Mandated	Comments
Site Plan Review	Yes	No	Yes	The Washington State Growth Management Act (RCW Chapter 36.70A) directs growth management and comprehensive planning for cities and counties. Town of South Cle Elum Comprehensive Plan was last adopted in June 2022.
Special Purpose (flood management, critical areas)	Yes	No	Yes	Title 15, Chapter 15.24 of the SCEMC (Flood Damage Prevention) Title 18 of the SCEMC (Critical Areas)
Capability Category	Local Authority	Other Authority	State Mandated	Comments
Planning Documents				
Comprehensive Plan	Yes	No	Yes	Cities in Washington State must update their Comprehensive Plan every eight (8) years, per the Washington Growth Management Act (GMA) and RCW.36.70A. Last updated in June 2022.
Comprehensive Emergency Management Plan	Yes	No	Yes	RCW 38.52 The County Comprehensive Emergency Plan (CEMP) was last updated in 2016, and an update is in progress.
Floodplain or Basin Plan	Yes	No	No	Kittitas County Comprehensive Floodplain Management Plan (1996)
Stormwater Plan	No	No	No	Stormwater Management Manual for Eastern Washington (2019)
Capital Improvement Plan	Yes	No	Yes	The Town maintains a five (5) year Capital Improvement Plan which is updated annually for streets, water, sewer, and drainage.
Habitat Conservation Plan	Yes	No	Yes	The GMA requires cities and counties to adopt regulations for the protection of environmental areas, which include habitat conservation areas. It is incorporated throughout the Town's Comprehensive Plan.
Economic Development Plan	No	No	Yes	
Emergency Response Plan	Yes	No	No	Upper Kittitas County Emergency Response Plan is under development.
Shoreline Management Plan	Yes	No	Yes	The goals and policies of the Shoreline Management Act (RCW 90.58.020) are adopted by reference as a goal of the GMA.
Post Disaster Recovery Plan	No	No	No	



5.2. Administrative and Technical Capabilities

The administrative and technical capabilities include community (i.e., public and private) staff and their skills and tools, which can be used for mitigation planning and implementation. This capability includes engineers, planners, emergency managers, GIS analysts, building inspectors, grant writers, and floodplain managers. Small communities may rely on other government entities, such as counties or special districts, for resources. These capabilities may be used to support mitigation activities. **Table 6** lists administrative and technical capabilities.

Table 6. Administrative and Technical Capabilities

Staff/Personnel Resources	Available	Department/Agency/Position
Planners or engineers with knowledge of land development and land management practices	Yes	The Town contracts HLA Engineering.
Engineers or professionals trained in building or infrastructure construction practices	Yes	The Town contracts HLA Engineering.
Planners or engineers with an understanding of natural hazards	Yes	The Town contracts HLA Engineering.
Staff with training in benefit/cost analysis	As-needed basis	The Town contracts HLA Engineering or BHC.
Floodplain manager	Yes	Jim DeVere, Town Mayor
Surveyors	Yes	The Town contracts HLA Engineering.
Personnel skilled or trained in GIS applications	Yes	The Town contracts HLA Engineering.
Scientist familiar with natural hazards in local area	As-needed basis	The Town contracts HLA Engineering.
Emergency manager	Yes	Jim DeVere, Town Mayor
Grant writers	Yes	The Town contracts HLA Engineering.

5.3. Financial Resources

Table 7 contains a list of financial capabilities available to the Town. These financial resources may be used to support mitigation activities based on procedures for each resource.

Table 7. Financial Resources

Financial Resources	Accessible or Eligible to Use
Community Development Block Grants	Yes
Capital Improvements Project Funding	Yes
Authority to Levy Taxes for Specific Purposes	Yes
User Fees for Water, Sewer, Gas or Electric Service	Yes
Incur Debt through General Obligation Bonds	Yes
Incur Debt through Special Tax Bonds	Yes
Incur Debt through Private Activity Bonds	No
Withhold Public Expenditures in Hazard-Prone Areas	No
State Sponsored Grant Programs	Yes
Development Impact Fees for Homebuyers or Developers	No



5.4. Education and Outreach Capabilities

Table 8 lists the Town's financial and public outreach capabilities. These capabilities include fire safety programs, hazard awareness campaigns, public information, and communications offices. Education and outreach capabilities can be used to inform the public about current and potential mitigation activities.

Table 8. Education and Outreach Resources

Resource	Available	Department/Agency/Position/Description
Public Information Officer	No	N/A
Personnel skilled or trained in website development	No	N/A
Hazard mitigation information available on your website	No	N/A
Utilize social media for hazard mitigation education and outreach	No	N/A
Citizen boards or commissions that address issues related to hazard mitigation	No	N/A
Other programs already in place that could be used to communicate hazard-related information	Yes	The Town includes any relevant information with the utility bills.
An established warning systems for hazard events	Yes	Kittitas County Sheriff's Office, Emergency Management Office

5.5. Needs to Expand/Improve Capabilities

The Town of South Cle Elum identified existing authorities, policies, programs, funding, and/or resources that need to be expanded and/or improved in order to support the implementation of the hazard mitigation initiatives identified in this Plan (e.g., mitigation actions).

- Building codes and ordinances should be reviewed based on developing trends in identified hazards and mitigation measures that can make them more effective at preventing losses. Furthermore, building codes should be updated to comply with the latest international and state building codes.
- Grant writing capabilities need to expand in order to improve the Town's ability to apply for hazard mitigation grants.
- GIS capabilities should be expanded in order to improve planning capabilities.
- Public works capabilities during an event need to expand.
- The Town's education and outreach capabilities needs improvement with the development of a website to include educational material on hazard mitigation and to provide information on mitigation activities the Town is doing (e.g., mitigation projects), and to educate residents about risk reduction.

6. HAZARD MITIGATION PLAN INTEGRATION

The information on hazards, risk, vulnerability, and mitigation contained in this Hazard Mitigation Plan is based on the best available data at the time of the Plan update. Plan integration consists of the incorporation of hazard mitigation into other relevant planning mechanisms including our Comprehensive Plan, Building Permits, and our Capital Improvement plan. It includes the integration of natural hazard information and mitigation policies, principles, and actions into local planning mechanisms and vice versa. Additionally, plan integration is achieved through the involvement of key staff and community officials in collaborative hazard mitigation planning.



6.1. Existing Plan Integration

In the performance period since the adoption of the previous Hazard Mitigation Plan, Town of South Cle Elum made progress on integrating components of the hazard mitigation strategy (e.g., goals, objectives, and actions) into the planning initiatives listed in **Table 9**.

Table 9. Existing Plan Integration

Planning Initiative	Description
Town Comprehensive Plan	The Hazard Mitigation Plan is utilized to identify new information that was not available during the previous revision of the Comprehensive Plan, relating to hazards (i.e., flood and fire), and climate adaptation and resiliency strategies.
Capital Improvement Plan	The Capital Improvement Plan (CIP) should continue to utilize flexibility in the CIP to incorporate mitigation measures in planned projects and the project evaluation criteria which includes public health and safety, regulatory compliance, and grant funding requirements.

6.2. Potential Future Integration

As the Hazard Mitigation Plan is implemented, the Town of South Cle Elum will use information from the Plan as the best available science and data on hazards. The capability assessment presented in Section 5 of this Annex identifies codes, plans, and programs that provide opportunities for integration. The Townwide and local action plans developed for this Hazard Mitigation Plan are related to plan integration. The capability assessment identified plans and programs, listed in **Table 10**, that do not currently integrate goals and recommendations of this Plan but provide opportunities to do so in the future.

Table 10. Potential Future Integration

Planning Initiative	Description
Town Comprehensive Plan	The opportunity to incorporate additional hazard mitigation and abatement measures will be contemplated for inclusion in the next Comprehensive Plan update or amendments. The Comprehensive Plan must be updated every (8) years.
Capital Improvement Plan	The Town will continue to ensure consistency between this Hazard Mitigation Plan and future updates of the CIP. The Hazard Mitigation Plan may identify new possible funding sources for capital improvement projects and may result in modifications to proposed projects based on results of the risk assessment.
Municipal Code	The hazards, goals, and actions of this Hazard Mitigation Plan will be considered in the next update of the Town's land use, zoning, and subdivision codes, as applicable.

The Town's Local Planning Team will identify all relevant planning initiatives that are scheduled to be updated in the next year and during the annual update process of the Hazard Mitigation Plan. Additionally, opportunities to integrate key elements of the Hazard Mitigation Plan, specifically any relevant strategies, into the planning initiatives will be identified by the Local Planning Team. Mitigation actions were identified to promote plan integration in future revisions of this Plan.

7. SIGNIFICANT HAZARD PAST EVENTS

A complete risk assessment, including past incidents, for each identified hazard of concern can be found in **Volume 1** of this Plan.



8. NATIONAL FLOOD INSURANCE PROGRAM

The Town of South Cle Elum is a member of the National Flood Insurance Program (NFIP) but has chosen to not participate in the NFIP's Community Rating System (CRS). The Town's NFIP participation information is listed in **Table 11**.

Table 11. NFIP Participation Information

CID	Community Name	NFIP Participation Date	Current Effective FIRM Date	CRS Entry Date	CRS Current Effective Date	CRS Class
530263	Town of South Cle Elum	5/5/1981	9/24/2021	N/A	N/A	N/A

8.1. Floodplain Manager

As an NFIP participating jurisdiction, the Town of South Cle Elum has a designated Floodplain Manager that is charged with enforcing floodplain regulations, routinely monitoring the floodplains, and providing community assistance such as encouraging owners to maintain flood insurance. The Town's Floodplain Manager information is listed in **Table 12**.

Table 12. Floodplain Manager

Jurisdiction	Department	Name	Title	Phone Number
Town of South Cle Elum	Mayor's Office	Jim DeVere	Mayor	(509) 674-4322

8.2. Participation Activities

The Town of South Cle Elum NFIP participation activities over the last five (5) years include the following:

- Provides the following services – permit review, GIS, inspections, and engineering capability.
- Teaches property owners or other stakeholders about the importance of flood insurance through public outreach events, workshops, and/or seminars.
- Enforces local floodplain regulations and monitors compliance.
- Floodplain management regulations meet or exceed FEMA or State minimum requirements.

8.2.1. Substantial Damage

Substantial damage means construction or reconstruction of residential structures is prohibited within designated floodways, except for repairs, reconstruction, or improvements to a structure which does not increase the ground floor area and the cost of which does not exceed 50% of the market value of the structure either:

- Before the repair, reconstruction, or improvement is started.
- If the structure has been damaged or is being restored, before the damage has occurred. Work done on structures to comply with existing health, sanitary, or safety codes or to structures identified as historic places may be excluded in the 50%. (South Cle Elum Municipal Code 15.10.180)



8.2.2. Substantial Improvement

Substantial improvement means any repair, reconstruction, or improvement of a structure, the cost of which equals or exceeds 50% of the market value of the structure either:

- Before the improvement or repair is started.
- If the structure has been damaged and is being restored, before the damage occurred.

For the purposes of this definition, *substantial improvement* is considered to occur when the first alteration of any wall, ceiling, floor, or other structural part of the building commences, whether or not the alterations affects the external dimensions of the structure. The term does not, however, include either:

- Any project for improvement of a structure to comply with existing state or local health, sanitary, or safety code specifications which are solely necessary to assure safe living conditions.
- Any alteration of a structure listed on the Natural Register of Historic Places or a State Inventory of Historic Places. (South Cle Elum Municipal Code 15.10.110)

8.3. Repetitive Loss and Severe Repetitive Loss Property

The Federal Emergency Management Agency (FEMA) defines a Repetitive Loss property as an NFIP insured structure with two (2) or more claims of more than \$1,000 each within any rolling 10-year period, since 1978.⁷

A Severe Repetitive Loss property is defined by FEMA as any NFIP insured structure for which either of the following is true when at least two (2) of the claims are within 10 years of each other (claims made within 10 days will be counted as one (1) claim):⁸

- That has incurred flood related damage for which four (4) or more separate claims payments have been made, with the amount of each claim (including buildings and contents payments) exceeding \$5,000, and with the cumulative amount of such claims exceeding \$20,000.
- For which at least two (2) separate claims payments (building payments only) have been made under such coverage, with the cumulative amount of such claims exceeding the market value of the building.

Repetitive loss records from the Town of South Cle Elum are listed in **Table 13**.

Table 13. Repetitive Loss Properties

Jurisdiction	Repetitive Loss Properties	Severe Repetitive Loss Properties
Town of South Cle Elum	0	0

⁷ Federal Emergency Management Agency. (2020). Repetitive Loss Structure. Retrieved from <https://www.fema.gov/node/405233>.

⁸ Federal Emergency Management Agency, National Flood Insurance Program. (2022). Flood Insurance Manual: Risk Rating 2.0: Equity in Action Edition. Retrieved from https://www.fema.gov/sites/default/files/documents/fema_nfip-flood-insurance-full-manual_102022.pdf.



Table 14 summarizes the NFIP active policies and coverage in force data for the Town of South Cle Elum.

Table 14. NFIP Policies

Jurisdiction	NFIP Policies	Insurance in Force	Total Claims Paid	Sum of Claims Paid
Town of South Cle Elum	8	\$1.874 Million	1	\$8,374

9. HAZARD VULNERABILITY AND IMPACT ASSESSMENT

Exposure and vulnerability to certain hazards affect the entire County and others are geographically defined. Although the entire County may be vulnerable to these hazards, their impacts may vary based on existing community conditions (e.g., underserved, or functional access needs populations may be more susceptible based on certain conditions, vulnerabilities, or needs).

A complete risk assessment for each identified hazard of concern is in **Volume 1** of this Plan. **Table 15** provides information on a several key vulnerabilities for the Town of South Cle Elum. Hazard mapping can be found in **Appendix A** of this Annex.

Table 15. Hazard Vulnerability and Impact Assessment

Hazards	Vulnerabilities and Impacts
Avalanche	The Local Planning Team determined that the Town does not have unique vulnerabilities and impacts to avalanches.
Dam and Levee Failure	There are a couple of dams located north of the Town. The Town is located on the banks of the Yakima River and in the event of a dam failure it could prove to have catastrophic impacts on the Town's public and infrastructure (e.g., sewer system). Additionally, if a high water event is significant enough to breach the Fireman Park levee, a significant portion of the Town is expected to flood.
Drought	The Town holds Junior Water Rights and can have these curtailed during a drought event.
Earthquake	The Town's water and sewer system are comprised mainly of an asbestos concrete pipe. This pipe was installed in 1958 and is becoming brittle and more prone to collapse or break.
Flood	The Town is located along the Yakima River and if a high water event is significant enough to breach the Fireman Park levee, a significant portion of the Town is expected to flood.
Landslide	The Local Planning Team determined that the Town does not have unique vulnerabilities and impacts to landslides.
Severe Weather (thunderstorms, hail, tornado, strong winds/damaging winds, extreme temperatures)	The Town of South Cle Elum is at the foot of the Cascade Mountains which results in consistent below 0°F temperatures in the winter months. Meanwhile, in the summer months, the Town experiences stretches of heat above 100°F. Extreme temperatures are harder on the Town's elderly and disabled population. Severe thunderstorms are a yearly occurrence.
Volcanic Activity	The Local Planning Team determined that the Town does not have unique vulnerabilities and impacts to volcanic activity.
Wildfire (wildfire smoke)	Wildfire smoke caused by wildfire activity within and outside of Kittitas Valley significantly impacts the air quality in the Town. The Town has a large population of elderly residents which are extremely vulnerable to poor air quality, and it could be detrimental to the health of this population.



Hazards	Vulnerabilities and Impacts
Winter Weather (ice storms, heavy snow, and blizzards)	Winter storms affect the Town almost every year producing feet of snow. The Town's elderly population becomes vulnerable during severe winter weather because they may become isolated.
Communicable Diseases/Pandemic	The Town has a higher population of elders.

The Town evaluated whether vulnerability and impact in hazard-prone areas had increased, decreased, or remained the same for each natural hazard identified in this Hazard Mitigation Plan. Climate change, changes in population, infrastructure expansion, and economic shifts that can affect vulnerability were considered. For example, if planned development is in an identified hazard areas or is not built to the updated building codes, it may increase the community's vulnerability to future hazards and disasters. On the other hand, if development occurred with mitigation practices in place, the vulnerability may have remained the same or decreased. Additionally, shifting demographics (e.g., underserved population) were taken into consideration.

Table 16 outlines if climate change has increased or decreased the Town's vulnerability (i.e., exposure) and impact to each natural hazard over the past five (5) years, and the effect of climate change in the future probability of occurrence and impacts from each natural hazard.

Table 16. Climate Change Current and Future Vulnerability and Impact

Hazard	Vulnerability and Impact
Current Vulnerability and Impact	
Avalanche	Remained the Same
Communicable Diseases/Pandemic	Remained the Same
Dam and Levee Failure	Remained the Same
Drought	Increased
Earthquake	Remained the Same
Extreme Cold/Extreme Heat (<i>Severe Weather</i>)	Increased
Flood	Increased
Landslide	Increased
Severe Weather (<i>thunderstorms, hail, strong winds/damaging winds, and tornado</i>)	Increased
Volcanic Activity	Remained the Same
Winter Weather (<i>ice storms, heavy snow, blizzards</i>)	Increased
Wildfire (<i>Wildfire Smoke</i>)	Increased
Future Vulnerability and Impact	
Avalanche	No Change is Anticipated
Communicable Diseases/Pandemic	No Change is Anticipated
Dam and Levee Failure	No Change is Anticipated
Drought	Increase



Hazard	Vulnerability and Impact
Earthquake	Increase
Extreme Cold/Extreme Heat (<i>Severe Weather</i>)	Increase
Flood	Increase
Landslide	Increase
Severe Weather (<i>thunderstorms, hail, strong winds/damaging winds, and tornado</i>)	Increase
Volcanic Activity	No Change is Anticipated
Winter Weather (<i>ice storms, heavy snow, blizzards</i>)	Increase
Wildfire (<i>Wildfire Smoke</i>)	Increase

Table 17 outlines if changes in population within the Town over the past five (5) years have increased or decreased the vulnerability (i.e., exposure) and impact to these natural hazards, and the anticipated effects changes in population may have on the future probability of occurrence and impacts from these natural hazards.

Table 17. Changes in Population Current and Future Vulnerability and Impact

Hazard	Vulnerability and Impact
<i>Current Vulnerability and Impact</i>	
Avalanche	Remained the Same
Communicable Diseases/Pandemic	Increased
Dam and Levee Failure	Remained the Same
Drought	Remained the Same
Earthquake	Remained the Same
Extreme Cold/Extreme Heat (<i>Severe Weather</i>)	Increased
Flood	Increased
Landslide	Remained the Same
Severe Weather (<i>thunderstorms, hail, strong winds/damaging winds, and tornado</i>)	Increased
Volcanic Activity	Remained the Same
Winter Weather (<i>ice storms, heavy snow, blizzards</i>)	Increased
Wildfire (<i>Wildfire Smoke</i>)	Increased
<i>Future Vulnerability and Impact</i>	
Avalanche	No Change is Anticipated
Communicable Diseases/Pandemic	Increase
Dam and Levee Failure	Increase
Drought	Increase
Earthquake	Increase



Hazard	Vulnerability and Impact
Extreme Cold/Extreme Heat (<i>Severe Weather</i>)	Increase
Flood	Increase
Landslide	Increase
Severe Weather (<i>thunderstorms, hail, strong winds/damaging winds, and tornado</i>)	Increase
Volcanic Activity	No Change is Anticipated
Winter Weather (<i>ice storms, heavy snow, blizzards</i>)	Increase
Wildfire (<i>Wildfire Smoke</i>)	Increase

Table 18 outlines if development over the past five (5) years has increased or decreased the jurisdiction's vulnerability (i.e., exposure) and impact to these natural hazards, and the anticipated effects changes in development may have on the future probability of occurrence and impacts from these natural hazards.

Table 18. Changes in Development Current and Future Vulnerability

Hazard	Vulnerability and Impact
<i>Current Vulnerability and Impact</i>	
Avalanche	Remained the Same
Communicable Diseases/Pandemic	Remained the Same
Dam and Levee Failure	Remained the Same
Drought	Increased
Earthquake	Increased
Extreme Cold/Extreme Heat (<i>Severe Weather</i>)	Increased
Flood	Increased
Landslide	Increased
Severe Weather (<i>thunderstorms, hail, strong winds/damaging winds, and tornado</i>)	Increased
Volcanic Activity	Remained the Same
Winter Weather (<i>ice storms, heavy snow, blizzards</i>)	Increased
Wildfire (<i>Wildfire Smoke</i>)	Increased
<i>Future Vulnerability and Impact</i>	
Avalanche	No Change Anticipated
Communicable Diseases/Pandemic	No Change Anticipated
Dam and Levee Failure	No Change Anticipated
Drought	Increase
Earthquake	Increase
Extreme Cold/Extreme Heat (<i>Severe Weather</i>)	Increase
Flood	Increase



Hazard	Vulnerability and Impact
Landslide	Increase
Severe Weather (<i>thunderstorms, hail, strong winds/damaging winds, and tornado</i>)	Increase
Volcanic Activity	No Change Anticipated
Winter Weather (<i>ice storms, heavy snow, blizzards</i>)	Increase
Wildfire (<i>Wildfire Smoke</i>)	Increase

The Town does not anticipate future major assets to be exposed or vulnerable to any of the natural hazards identified in this Hazard Mitigation Plan. However, the aging infrastructure can potentially become vulnerable overtime. Any new assets (e.g., new construction in hazard prone areas) will be constructed to adhere to the latest building codes and standards, and mitigation to protect them from identified and anticipated hazards, especially those that are expected to increase due to climate change.

10. HAZARD RISK RANKING

Table 19 presents the local hazard ranking for the Town of South Cle Elum of all hazards of concern listed in **Volume 1** of this Plan. This ranking summarizes how hazards vary for this jurisdiction. As described in detail in **Volume 1**, the ranking process involves an assessment of the likelihood of occurrence for each hazard, along with its potential impacts on people, property, and the economy.

Table 19. Hazard Risk Ranking

Hazard Event	Probability Factor	Sum of Weighted Extent Factors	Sum of Weighted Vulnerability Factors	Sum of Weighted Impact Factors	Consequence Score	Total Risk Score (Probability x Consequence)
Winter Weather (<i>Blizzard/Heavy Snow, Ice Storm</i>)	3	15	16	24	55	77
Flood	2	18	16	31	65	63
Earthquake	2	12	16	33	61	59
Strong Wind / Damaging Winds (<i>Severe Weather</i>)	3	9	16	15	40	59
Wildfire Smoke (<i>Wildfire</i>)	3	9	10	20	39	57
Wildfire	2	15	11	27	53	53
Thunderstorms (<i>Severe Weather</i>)	2	6	16	26	48	48
Communicable Diseases / Pandemic	2	18	10	20	48	48
Cold Wave / Extreme Cold (<i>Severe Weather</i>)	2	12	12	20	44	45
Drought	2	9	6	29	44	45
Heat Wave / Extreme Heat (<i>Severe Weather</i>)	2	12	12	17	41	42



Hazard Event	Probability Factor	Sum of Weighted Extent Factors	Sum of Weighted Vulnerability Factors	Sum of Weighted Impact Factors	Consequence Score	Total Risk Score (Probability x Consequence)
Dam and Levee Failure	1	18	16	29	63	34
Hail (Severe Weather)	1	6	16	16	38	22
Tornado (Severe Weather)	1	6	16	16	38	22
Volcanic Activity	1	12	6	15	33	20
Avalanche	1	6	6	13	25	15
Landslide	1	6	6	13	25	15
<p>Consequence: Sum of <u>all</u> weighted factors. Extent: Sum of the weighted <u>Extent</u> factors. Vulnerability: Sum of the weighted <u>Vulnerability</u> factors.</p> <p>Impact: Sum of the weighted <u>Impact</u> factors. Total Risk Score* = Probability x Consequence * Normalized to 100</p>						
Total Risk Score Legend						
Classification	Probability Factor	Extent	Vulnerability	Impact	Consequence Score	Total Risk Score
Low (L)	1	0 – 6	0 – 6	0 – 12	0 – 24	0 – 24
Medium (M)	2	7 – 12	7 – 12	13 – 26	25 – 50	25 – 52
High (H)	3	13 – 18	13 – 18	27 – 39	51 – 75	53 and above
<p>The legend—specifically the assignment of low, medium, and high—provides an additional means to qualitatively assess the probability factor, sum of weighted factors, and the total risk scores for each hazard. The Consequence Score represents the sum of the Extent, Vulnerability, and Impact Factors. The Total Risk Score is a measure of Probability and Consequence.</p>						



11. MITIGATION ACTIONS

This section includes the mitigation actions that were developed to address identified risks and vulnerabilities to hazards identified in this Plan. This Plan serves only to recommend mitigation measures based on the potential for risk reduction and available funding. Implementation of mitigation actions is dependent on risk reduction priorities, feasibility, and available funding. It is also dependent on the cooperation and support of the jurisdiction and/or department responsible for each action item.

The Town of South Cle Elum agreed upon **14** mitigation actions that apply to the jurisdiction's properties where they have jurisdictional responsibility and authority. A summary of the Town's mitigation actions status is listed in **Table 20**.

Table 20. Town of South Cle Elum Mitigation Actions Summary

Status		Mitigation Action Total	
Ongoing		9	
In Progress/In Work		0	
Not Started		5	
Delayed/Deferred		0	
New		0	
TOTAL		14	
Completed		0	
Deleted/No Longer Needed		0	
Mitigation Actions per Hazard			
Avalanche	9	Landslide	9
Dam and Levee Failure	9	Severe Weather	9
Drought	9	Volcanic Activity	9
Earthquake	11	Wildfire	10
Flood	13	Winter Weather	9

These shared actions, some of which address all hazards, help to meet the following requirements:

- Does the Plan identify and analyze a comprehensive range of specific mitigation actions and projects for each jurisdiction being considered to reduce the effects of hazards, with emphasis on new and existing buildings and infrastructure?
- Does the Plan include one (1) or more action(s) per jurisdiction for each hazard identified within the risk assessment?

A detailed explanation of the Mitigation Strategy can be found in Chapter 5 of **Volume 1**.



Mitigation Action	Retrofit sewer mains within the Town's flood hazard areas.				
Action Number	SCE-1	Year Initiated / Anticipated Year of Initiation	2019 or before	Prioritization Score	35/40
Goal(s) Addressed		1, 2, 3, 5	Hazard(s) Mitigated	Earthquake, Flood	
Project Status		Not Started	If Deleted/No Longer Needed, provide reason.	n/a	
Benefits <i>(Loss Avoided)</i>		High			
Lead Agency / Organization		Town of South Cle Elum Public Works Department	Supporting Agency / Organization <i>(If applicable)</i>	n/a	
Additional Participating Jurisdictions <i>(If applicable)</i>		n/a			
Project Duration		Long Term	Estimated Cost	High	
Potential Funding Source		Local Budgeted Funds, BRIC, HMGP	If Other, you must identify a funding source.	n/a	
			Please provide further detail on Potential Funding Source.	Capital Improvement Project Funding, General Fund (Staff Time)	
Implementation Priority	High	Changes in Priority <i>(If applicable)</i>			



Mitigation Action	Retrofit sewer mains within the Town's flood hazard areas.				
Action Number	SCE-2	Year Initiated / Anticipated Year of Initiation	2019 or before	Prioritization Score	36/40
Goal(s) Addressed		1, 2, 3, 5	Hazard(s) Mitigated	Earthquake, Flood	
Project Status		Not Started	If Deleted/No Longer Needed, provide reason.	n/a	
Benefits <i>(Loss Avoided)</i>		High			
Lead Agency / Organization	Town of South Cle Elum Public Works Department		Supporting Agency / Organization <i>(If applicable)</i>	n/a	
Additional Participating Jurisdictions <i>(If applicable)</i>	n/a				
Project Duration	Long Term		Estimated Cost	High	
Potential Funding Source	Local Budgeted Funds, BRIC, FMA, HMGP		If Other, you must identify a funding source.	n/a	
			Please provide further detail on Potential Funding Source.	Capital Improvement Project Funding, General Fund (Staff Time)	
Implementation Priority	High	Changes in Priority <i>(If applicable)</i>			



Mitigation Action	Retrofit existing localized flood control structures in the Town.				
Action Number	SCE-3	Year Initiated / Anticipated Year of Initiation	2019 or before	Prioritization Score	38/40
Goal(s) Addressed		1, 2, 3, 5	Hazard(s) Mitigated	Flood	
Project Status		Ongoing	If Deleted/No Longer Needed, provide reason.	n/a	
Benefits <i>(Loss Avoided)</i>		High			
Lead Agency / Organization	Town of South Cle Elum Public Works Department		Supporting Agency / Organization <i>(If applicable)</i>	n/a	
Additional Participating Jurisdictions <i>(If applicable)</i>	n/a				
Project Duration	Short Term		Estimated Cost	Low	
Potential Funding Source	Local Budgeted Funds		If Other, you must identify a funding source.	n/a	
			Please provide further detail on Potential Funding Source.	General Fund (Staff Time)	
Implementation Priority	High	Changes in Priority <i>(If applicable)</i>			



Mitigation Action	Retrofit all critical infrastructure to increase resiliency to all hazards.				
Action Number	SCE-4	Year Initiated / Anticipated Year of Initiation	2019 or before	Prioritization Score	36/40
Goal(s) Addressed		1, 2, 3, 5	Hazard(s) Mitigated	Avalanche, Dam and Levee Failure, Drought, Earthquake, Flood, Landslide, Severe Weather, Volcano Activity, Wildfire, Winter Weather	
Project Status		Not Started	<i>If Deleted/No Longer Needed</i> , provide reason.	n/a	
Benefits <i>(Loss Avoided)</i>		High			
Lead Agency / Organization	Town of South Cle Elum Public Works Department		Supporting Agency / Organization <i>(If applicable)</i>	n/a	
Additional Participating Jurisdictions <i>(If applicable)</i>	n/a				
Project Duration	Long Term		Estimated Cost	High	
Potential Funding Source	Local Budgeted Funds, HMGP		<i>If Other</i> , you must identify a funding source.	n/a	
			Please provide further detail on Potential Funding Source.	Capital Improvements Project Funding, General Fund (Staff Time)	
Implementation Priority	High	Changes in Priority <i>(If applicable)</i>			



Mitigation Action	Adopt appropriate regulatory standards that will reduce the risk of natural hazards through updates to existing code affecting critical areas regulations, flood hazard regulations, shoreline regulations, and updates to the Town's Comprehensive Plan.				
Action Number	SCE-5	Year Initiated / Anticipated Year of Initiation	2019 or before	Prioritization Score	38/40
Goal(s) Addressed	1, 2, 4, 5		Hazard(s) Mitigated	Avalanche, Dam and Levee Failure, Drought, Earthquake, Flood, Landslide, Severe Weather, Volcano Activity, Wildfire, Winter Weather	
Project Status	Ongoing	If Deleted/No Longer Needed, provide reason.		n/a	
Benefits (Loss Avoided)	Medium				
Lead Agency / Organization	Town of South Cle Elum Public Works Department		Supporting Agency / Organization (If applicable)	n/a	
Additional Participating Jurisdictions (If applicable)	n/a				
Project Duration	Short Term		Estimated Cost	Low	
Potential Funding Source	Local Budgeted Funds	If Other, you must identify a funding source.		n/a	
		Please provide further detail on Potential Funding Source.		General Fund (Staff Time)	
Implementation Priority	High	Changes in Priority (If applicable)			



Mitigation Action	Maintain compliance and good standing under the National Flood Insurance Program (NFIP).				
Action Number	SCE-6	Year Initiated / Anticipated Year of Initiation	2019 or before	Prioritization Score	39/40
Goal(s) Addressed	1, 2, 4, 5		Hazard(s) Mitigated	Flood	
Project Status	Ongoing	If Deleted/No Longer Needed, provide reason.		n/a	
Benefits (Loss Avoided)	Medium				
Lead Agency / Organization	Town of South Cle Elum Public Works Department		Supporting Agency / Organization (If applicable)	n/a	
Additional Participating Jurisdictions (If applicable)	n/a				
Project Duration	Short Term		Estimated Cost	Low	
Potential Funding Source	Local Budgeted Funds		If Other, you must identify a funding source.	n/a	
			Please provide further detail on Potential Funding Source.	General Fund (Staff Time)	
Implementation Priority	High	Changes in Priority (If applicable)			



Mitigation Action	Retrofit the overflow system for the Town's water supply.				
Action Number	SCE-7	Year Initiated / Anticipated Year of Initiation	2019 or before	Prioritization Score	34/40
Goal(s) Addressed		1, 2, 5	Hazard(s) Mitigated	Avalanche, Dam and Levee Failure, Drought, Earthquake, Flood, Landslide, Severe Weather, Volcanic Activity, Wildfire, Winter Weather	
Project Status		Not Started	<i>If Deleted/No Longer Needed</i> , provide reason.	n/a	
Benefits <i>(Loss Avoided)</i>		High			
Lead Agency / Organization	Town of South Cle Elum Public Works Department		Supporting Agency / Organization <i>(If applicable)</i>	n/a	
Additional Participating Jurisdictions <i>(If applicable)</i>	n/a				
Project Duration	Long Term		Estimated Cost	High	
Potential Funding Source	Local Budgeted Funds		<i>If Other</i> , you must identify a funding source.	n/a	
			Please provide further detail on Potential Funding Source.	General Fund (Staff Time), Water Fund Reserve	
Implementation Priority	High	Changes in Priority <i>(If applicable)</i>			



Mitigation Action	Conduct a study on wildfire prevention and policies, and participate in Firewise.				
Action Number	SCE-8	Year Initiated / Anticipated Year of Initiation	2019 or before	Prioritization Score	39/40
Goal(s) Addressed	1, 2, 3, 4		Hazard(s) Mitigated	Wildfire	
Project Status	Ongoing	If Deleted/No Longer Needed, provide reason.		n/a	
Benefits (Loss Avoided)	High				
Lead Agency / Organization	Town of South Cle Elum Fire Department		Supporting Agency / Organization (If applicable)	n/a	
Additional Participating Jurisdictions (If applicable)	n/a				
Project Duration	Short Term		Estimated Cost	Low	
Potential Funding Source	Local Budgeted Funds, BRIC, HMGP, HMGP Post Fire		If Other, you must identify a funding source.	n/a	
			Please provide further detail on Potential Funding Source.	General Fund (Staff Time)	
Implementation Priority	High	Changes in Priority (If applicable)			



Mitigation Action	Where appropriate, support retrofitting, purchase, or relocation of structures in hazard prone areas to protect them from future damage with priority for properties exposed to repetitive losses.				
Action Number	SCE-9	Year Initiated / Anticipated Year of Initiation	2019 or before	Prioritization Score	33/40
Goal(s) Addressed		1, 2, 3, 4, 5	Hazard(s) Mitigated	Avalanche, Dam and Levee Failure, Drought, Earthquake, Flood, Landslide, Severe Weather, Volcanic Activity, Wildfire, Winter Weather	
Project Status		Not Started	If Deleted/No Longer Needed, provide reason.	n/a	
Benefits <i>(Loss Avoided)</i>		High			
Lead Agency / Organization	Town of South Cle Elum Public Works Department		Supporting Agency / Organization <i>(If applicable)</i>	n/a	
Additional Participating Jurisdictions <i>(If applicable)</i>	n/a				
Project Duration	Long Term		Estimated Cost	High	
Potential Funding Source	Local Budgeted Funds, BRIC, FMA, HMGP, HMGP Post Fire		If Other, you <u>must</u> identify a funding source.	n/a	
			Please provide further detail on Potential Funding Source.	Local Contribution	
Implementation Priority	High	Changes in Priority <i>(If applicable)</i>			



Mitigation Action	Develop and implement a Continuity of Operations Plan (COOP) and/or Post-Disaster Recovery Plan to ensure critical Town functions remain operational after an incident or disaster.				
Action Number	SCE-10	Year Initiated / Anticipated Year of Initiation	2019 or before	Prioritization Score	38/40
Goal(s) Addressed		1, 4	Hazard(s) Mitigated	Avalanche, Dam and Levee Failure, Drought, Earthquake, Flood, Landslide, Severe Weather, Volcanic Activity, Wildfire, Winter Weather	
Project Status		Ongoing	<i>If Deleted/No Longer Needed</i> , provide reason.	n/a	
Benefits <i>(Loss Avoided)</i>		High			
Lead Agency / Organization	Town of South Cle Elum (Emergency Management Staff)		Supporting Agency / Organization <i>(If applicable)</i>	n/a	
Additional Participating Jurisdictions <i>(If applicable)</i>	n/a				
Project Duration	Long Term		Estimated Cost	Medium	
Potential Funding Source	Local Budgeted Funds, BRIC, FMA, HMGP		<i>If Other</i> , you must identify a funding source.	n/a	
			Please provide further detail on Potential Funding Source.	General Fund (Staff Time)	
Implementation Priority	High	Changes in Priority <i>(If applicable)</i>			



Mitigation Action	Utilize and enhance existing public outreach programs to raise public awareness about natural hazards, the risks they pose, and ways to reduce those risks.				
Action Number	SCE-11	Year Initiated / Anticipated Year of Initiation	2019 or before	Prioritization Score	39/40
Goal(s) Addressed	1, 3, 4		Hazard(s) Mitigated	Avalanche, Dam and Levee Failure, Drought, Earthquake, Flood, Landslide, Severe Weather, Volcanic Activity, Wildfire, Winter Weather	
Project Status	Ongoing		If Deleted/No Longer Needed, provide reason.	n/a	
Benefits <i>(Loss Avoided)</i>	Low				
Lead Agency / Organization	Town of South Cle Elum (Emergency Management Staff)		Supporting Agency / Organization <i>(If applicable)</i>	n/a	
Additional Participating Jurisdictions <i>(If applicable)</i>	n/a				
Project Duration	Ongoing		Estimated Cost	Low	
Potential Funding Source	Local Budgeted Funds		If Other, you must identify a funding source.	n/a	
			Please provide further detail on Potential Funding Source.	General Fund (Staff Time)	
Implementation Priority	High	Changes in Priority <i>(If applicable)</i>			



Mitigation Action	Actively support and participate in the implementation, monitoring, maintenance, and updating of the Kittitas County Hazard Mitigation Plan, as outlined and defined in Volume 1.				
Action Number	SCE-12	Year Initiated / Anticipated Year of Initiation	2019 or before	Prioritization Score	40/40
Goal(s) Addressed		1, 2, 3, 4, 5,	Hazard(s) Mitigated	Avalanche, Dam and Levee Failure, Drought, Earthquake, Flood, Landslide, Severe Weather, Volcanic Activity, Wildfire, Winter Weather	
Project Status		Ongoing	If Deleted/No Longer Needed, provide reason.	n/a	
Benefits (Loss Avoided)		Medium			
Lead Agency / Organization		Town of South Cle Elum Public Works Department	Supporting Agency / Organization (If applicable)	n/a	
Additional Participating Jurisdictions (If applicable)		n/a			
Project Duration		Ongoing	Estimated Cost	Low	
Potential Funding Source		Local Budgeted Funds, HMGP	If Other, you must identify a funding source.	n/a	
			Please provide further detail on Potential Funding Source.	General Fund (Staff Time), Road Fund	
Implementation Priority	High	Changes in Priority (If applicable)			



Mitigation Action	Continue to support through active participation the countywide initiatives identified in Volume 1 of the Kittitas County Hazard Mitigation Plan.				
Action Number	SCE-13	Year Initiated / Anticipated Year of Initiation	2019 or before	Prioritization Score	40/40
Goal(s) Addressed	1, 3, 4		Hazard(s) Mitigated	Avalanche, Dam and Levee Failure, Drought, Earthquake, Flood, Landslide, Severe Weather, Volcanic Activity, Wildfire, Winter Weather	
Project Status	Ongoing		If Deleted/No Longer Needed, provide reason.	n/a	
Benefits (Loss Avoided)	Medium				
Lead Agency / Organization	Town of South Cle Elum Public Works Department		Supporting Agency / Organization (If applicable)	n/a	
Additional Participating Jurisdictions (If applicable)	n/a				
Project Duration	Ongoing		Estimated Cost	Low	
Potential Funding Source	Local Budgeted Funds		If Other, you <u>must</u> identify a funding source.	n/a	
			Please provide further detail on Potential Funding Source.	General Fund (Staff Time)	
Implementation Priority	High	Changes in Priority (If applicable)			



Mitigation Action	Maintain and retrofit critical transportation infrastructure, in particular, infrastructure allowing access to the Town.				
Action Number	SCE-14	Year Initiated / Anticipated Year of Initiation	2019 or before	Prioritization Score	36/40
Goal(s) Addressed		1, 5	Hazard(s) Mitigated	Avalanche, Dam and Levee Failure, Drought, Earthquake, Flood, Landslide, Severe Weather, Volcanic Activity, Wildfire, Winter Weather	
Project Status		Ongoing	If Deleted/No Longer Needed, provide reason.	n/a	
Benefits <i>(Loss Avoided)</i>		High			
Lead Agency / Organization	Town of South Cle Elum Public Works Department		Supporting Agency / Organization <i>(If applicable)</i>	n/a	
Additional Participating Jurisdictions <i>(If applicable)</i>	n/a				
Project Duration	Ongoing		Estimated Cost	Medium	
Potential Funding Source	Local Budgeted Funds, HMGP		If Other, you must identify a funding source.	n/a	
			Please provide further detail on Potential Funding Source.	General Fund (Staff Time), Capital Improvements Project Funding	
Implementation Priority	High	Changes in Priority <i>(If applicable)</i>			



APPENDIX A. HAZARD MAPS

Figure 1	Town of South Cle Elum Planning Area
Figure 2	Critical Facilities within and around the Town boundary.
Figure 3	Liquefaction Susceptibility (Earthquake) <i>Helps assess potential damage from earthquakes in the Town.</i>
Figure 4	Special Flood Hazard Area (SFHA) <i>Includes each Flood Zone, and the 500-year floodplain. Flood Insurance Rate Maps (FIRMs) show the flood zones, floodplain boundaries, and Base Floor Elevation (BFE) and are used for floodplain management, flood insurance ratings, and to determine flood insurance requirements. FIRMs show areas with a 1% chance of flooding each year, commonly known as the 100-year floodplains, and are illustrated as the SFHA. The 500-year floodplains show areas with a 0.2% chance of flooding each year.</i>
Figure 5	Cle Elum Dam Inundation Area
Figure 6	Easton Dam Inundation Area
Figure 7	Keechelus and Kachees Dam Inundation Area
Figure 8	Wildland Fire Hazard Area
Figure 9	Wildland Urban Interface Map

Figure 1. Town of South Cle Elum Planning Area

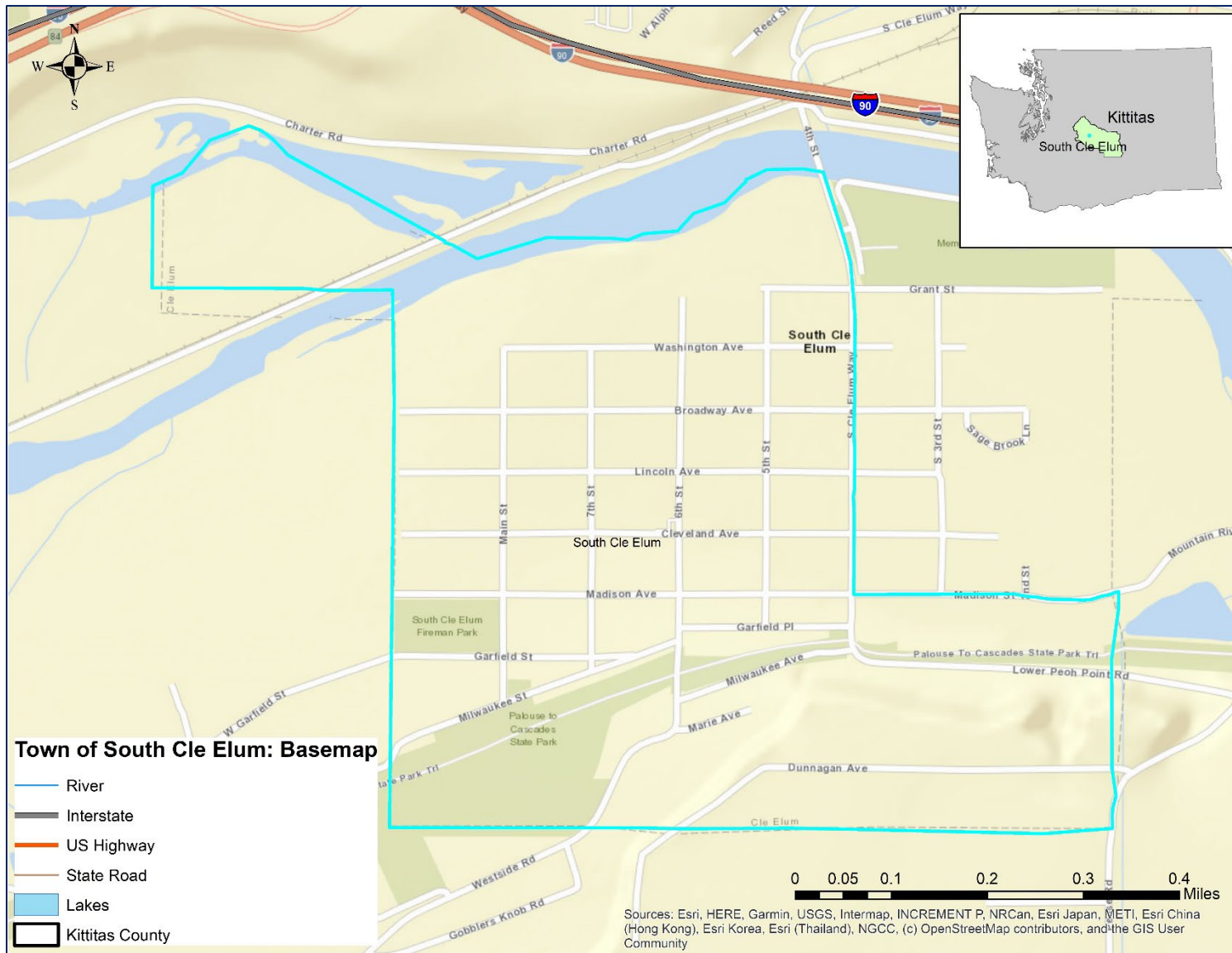




Figure 2. Town of South Cle Elum Critical Facilities

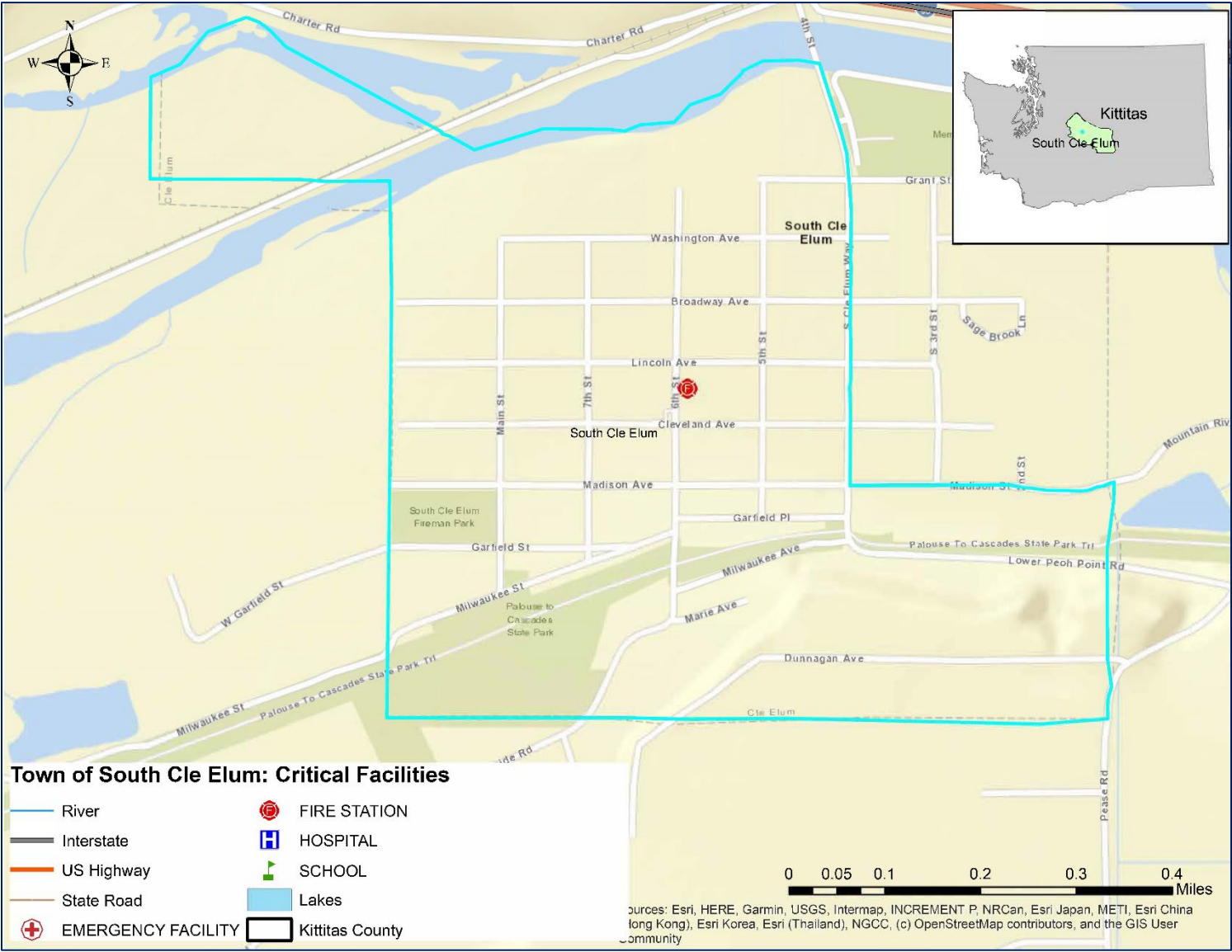


Figure 3. Liquefaction Susceptibility (Earthquake)

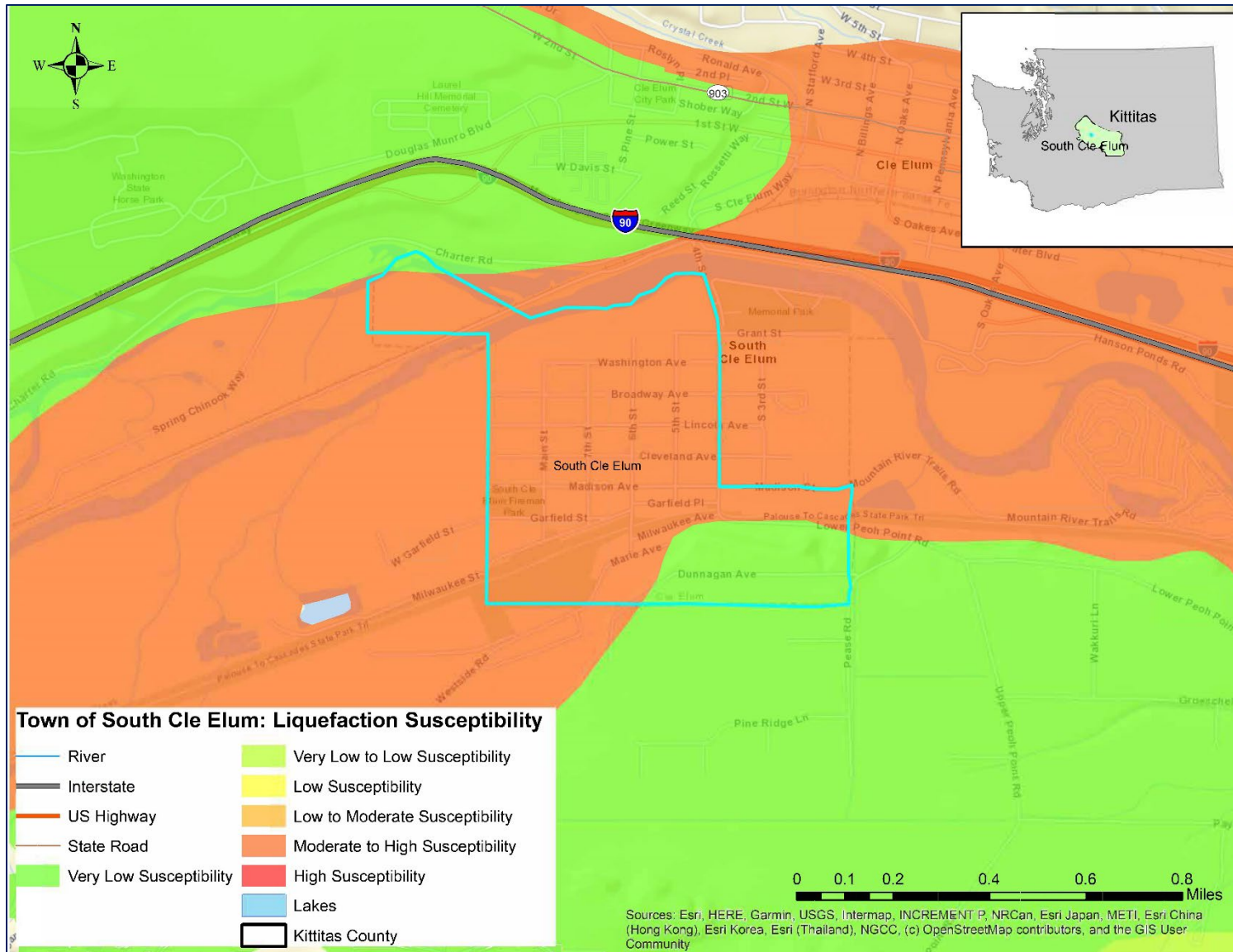


Figure 4. Special Flood Hazard Area

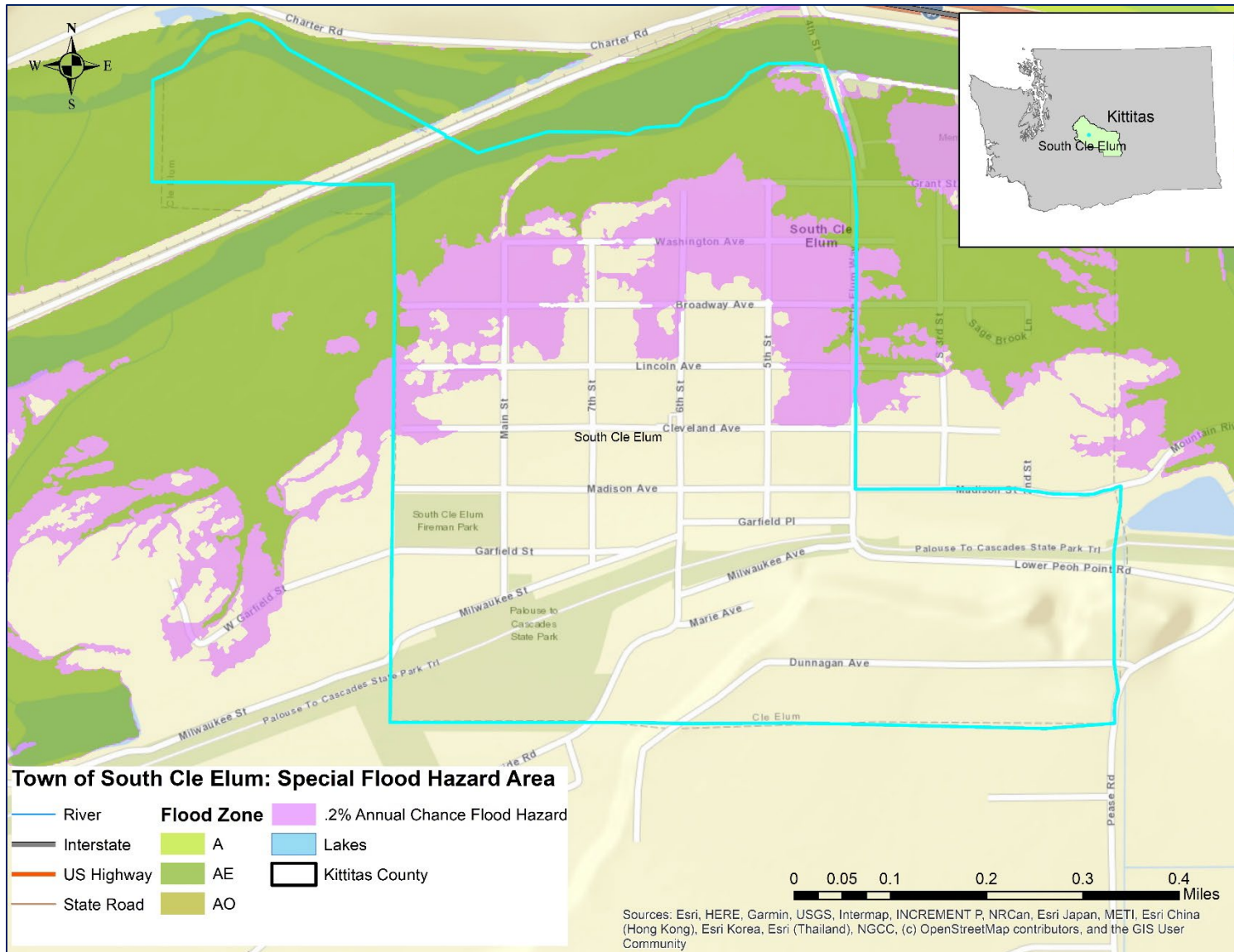


Figure 5. Cle Elum Dam Inundation Area

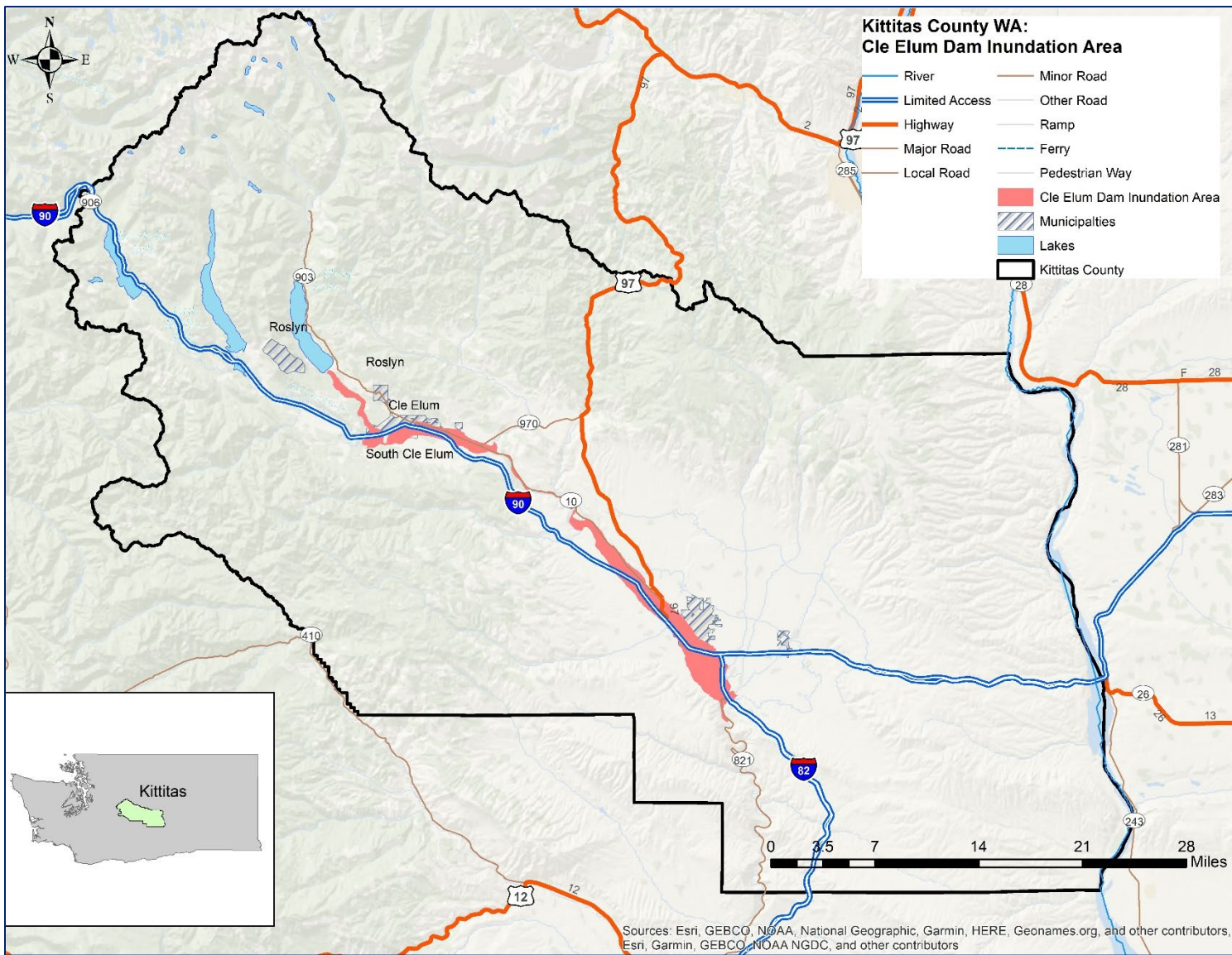




Figure 6. Easton Dam Inundation Area

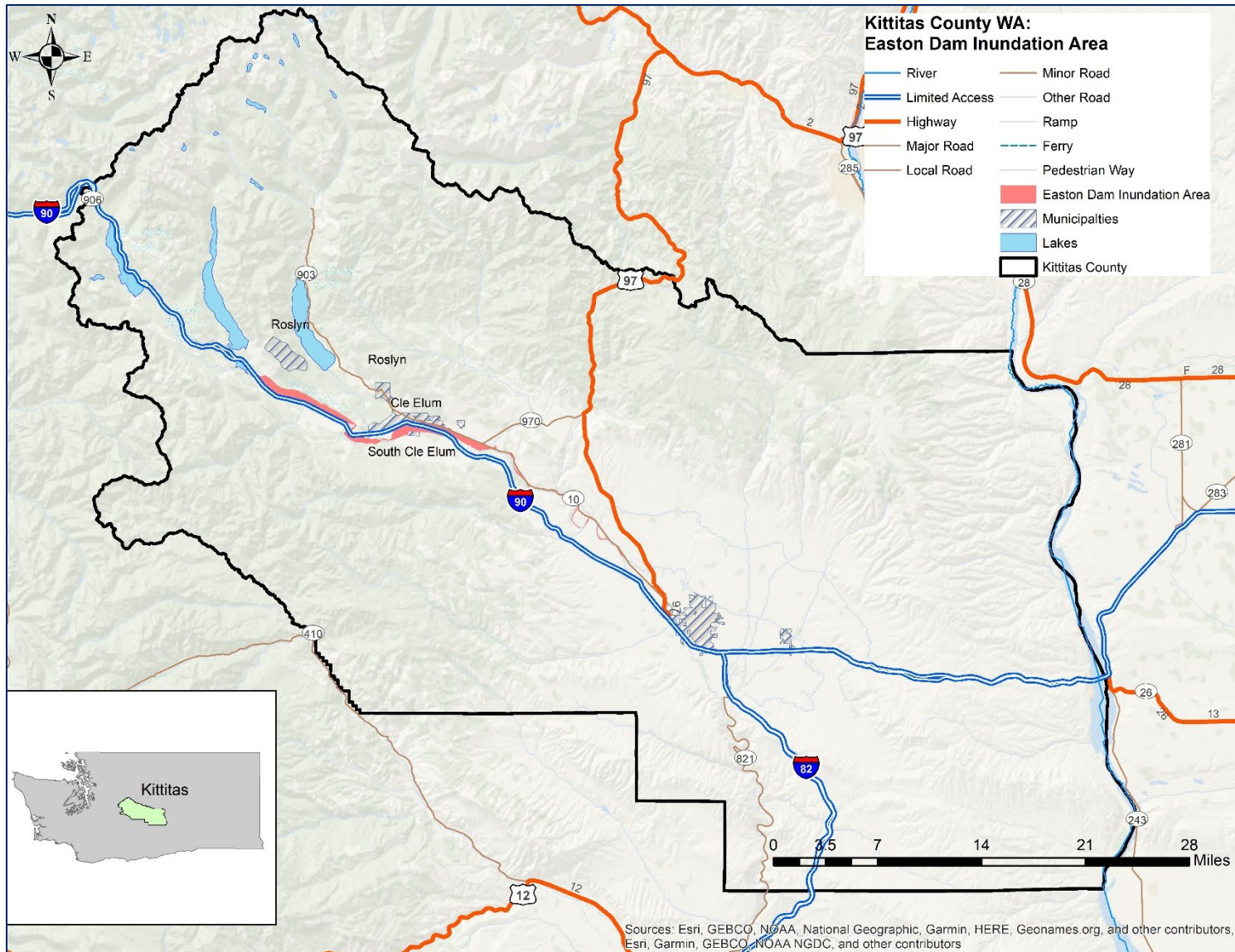




Figure 7. Keechelus and Kachees Dam Inundation Area

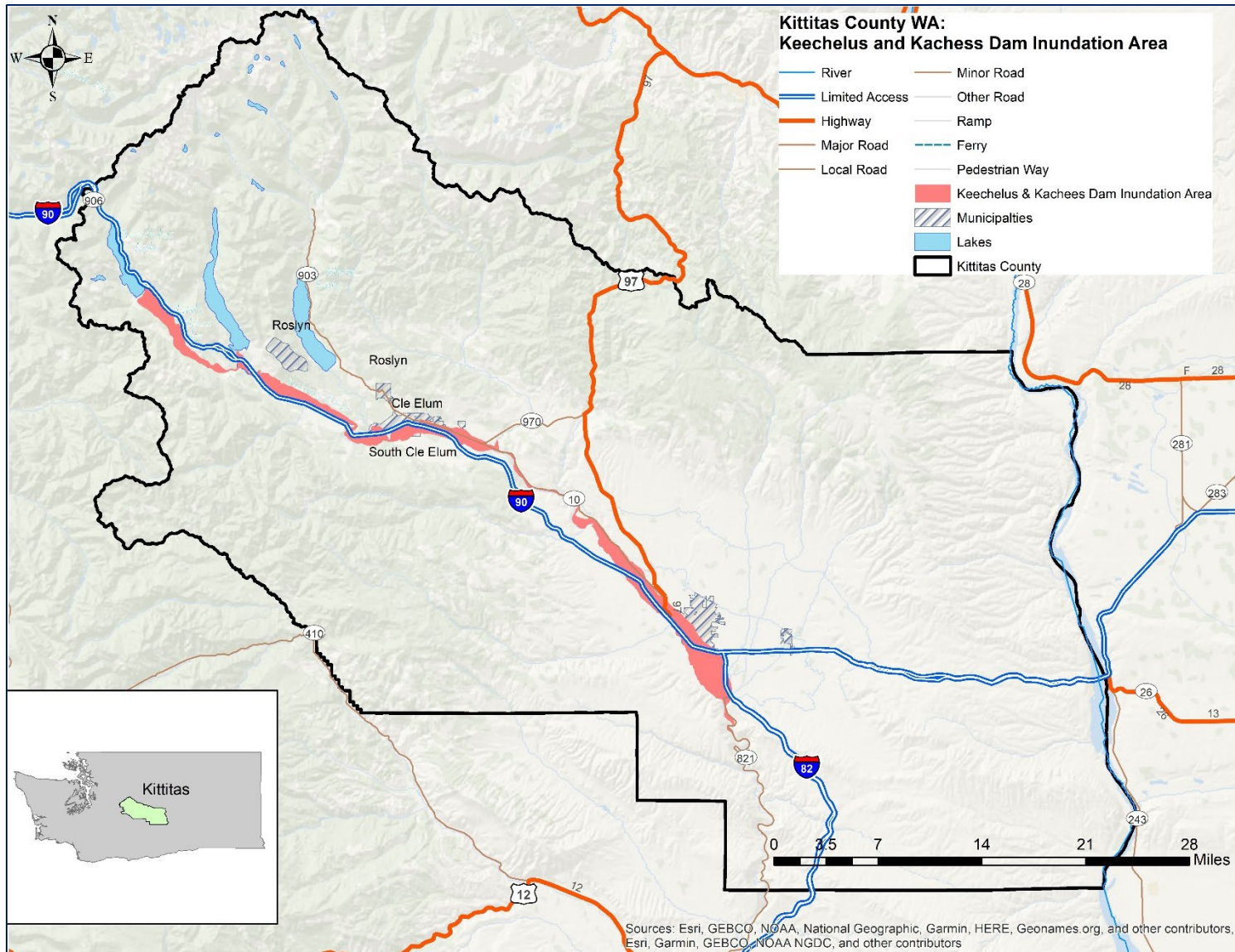


Figure 8. Wildland Fire Hazard Area

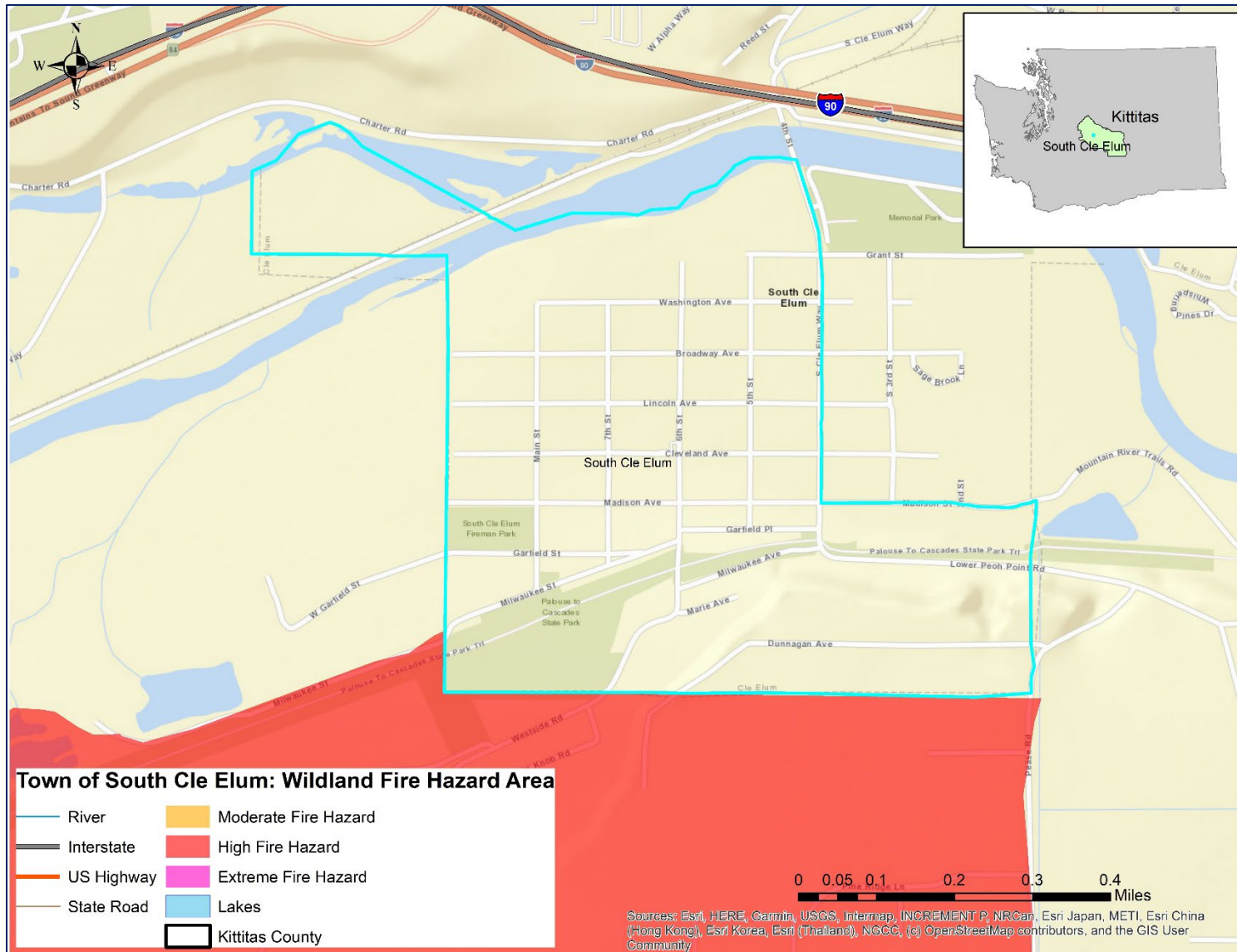
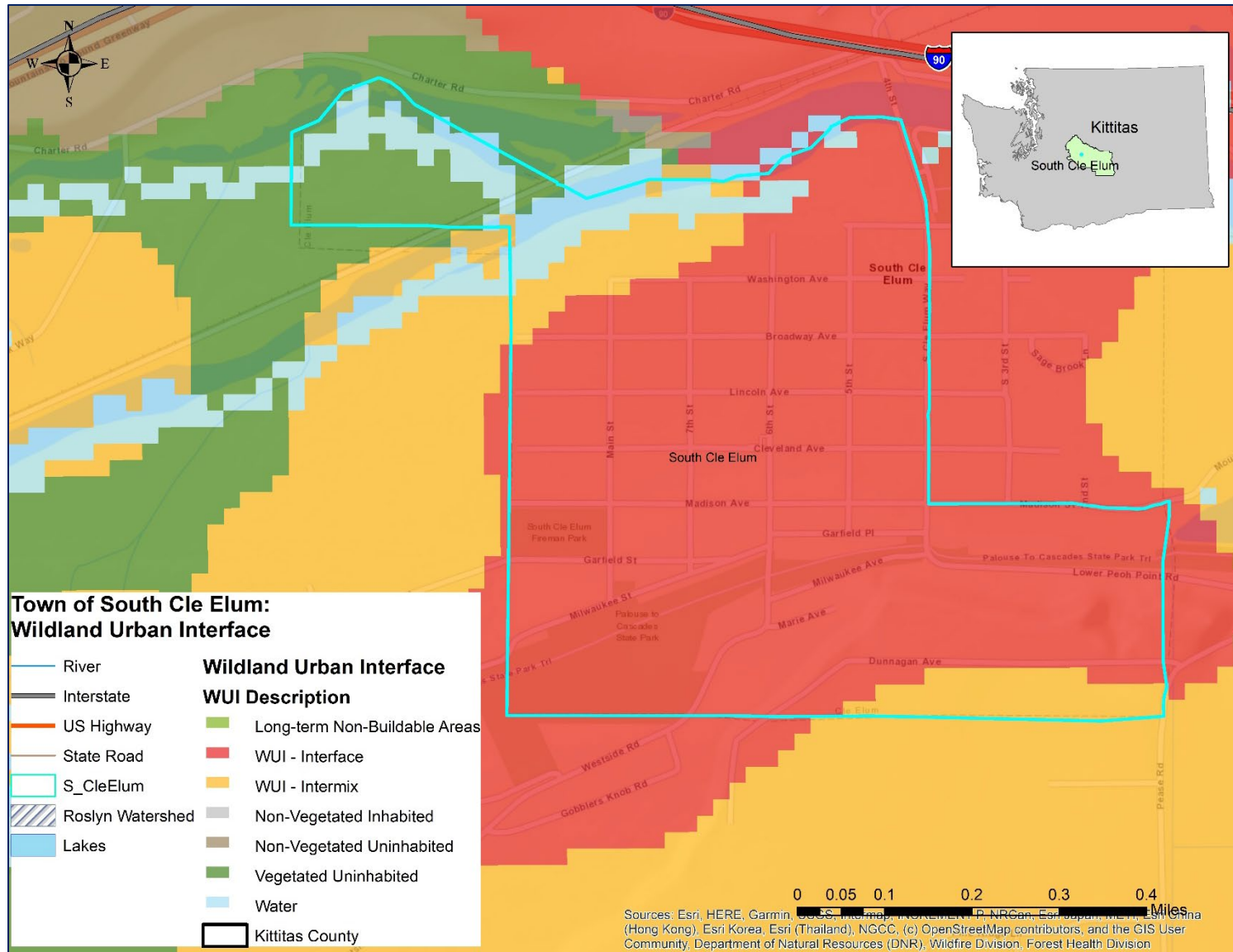


Figure 9. Wildland Urban Interface





APPENDIX B. PLAN ADOPTION

[Placeholder for adoption documentation after State and FEMA Approval]